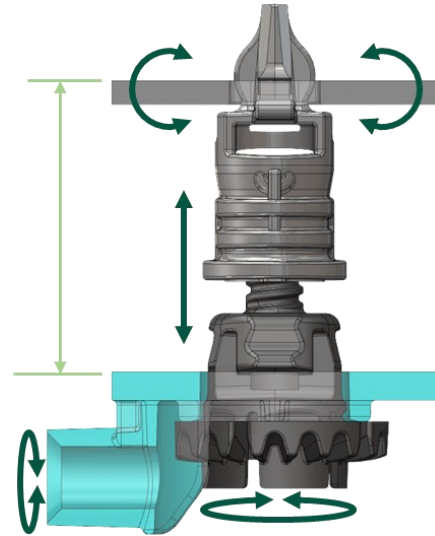
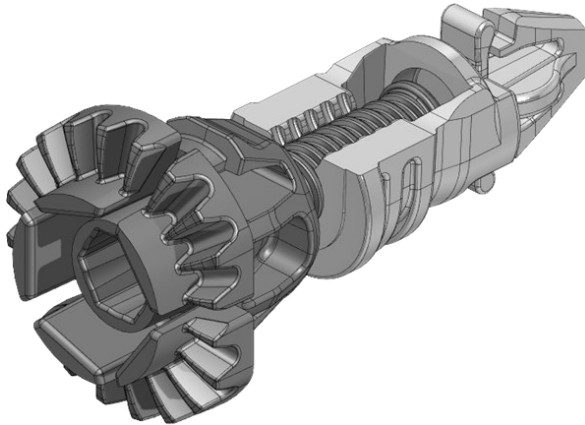


# Grimm Fog Lamp Adjuster

Rev. Date  
12April24

## Product Overview



**ASYST P/N 26882**

### Uses:

- Mounting and aiming of non-sealed, short preset, blind assembly applications
- Accommodates both inline or right-angle adjustment

### Benefits:

- Supports blind assembly
- Does not require additional sockets as panel rotates around the housing head
- Provides clutching throughout travel
- Can be adjusted both inline with hex or P2 and through its right-angle P2 interface

### Specifications:

- 30.6mm short preset
- $\pm 3$ mm axial travel
- Up to  $\pm 5^\circ$  bracket angular travel with respect to the adjuster housing
- Axial push through force > 300 N
- Clutching torque < 1.2 Nm
- Clutching force > 100 N

# ASYST

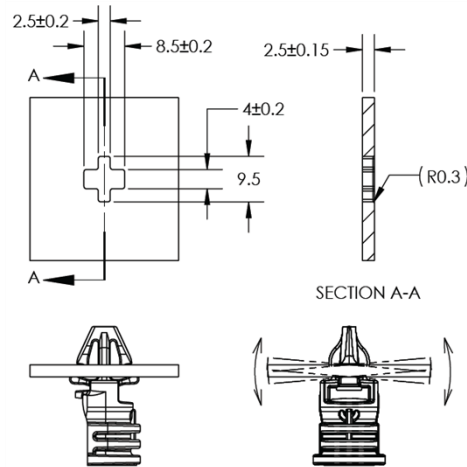
#### **NORTH AMERICA**

Ethan Warner  
Regional Sales & Application Engineer  
5811 99th Ave.  
Kenosha, WI 53144—USA  
Phone: +1-765-246-2323  
Email: ewarner@asysttech.com

# Grimm Fog Lamp Adjuster

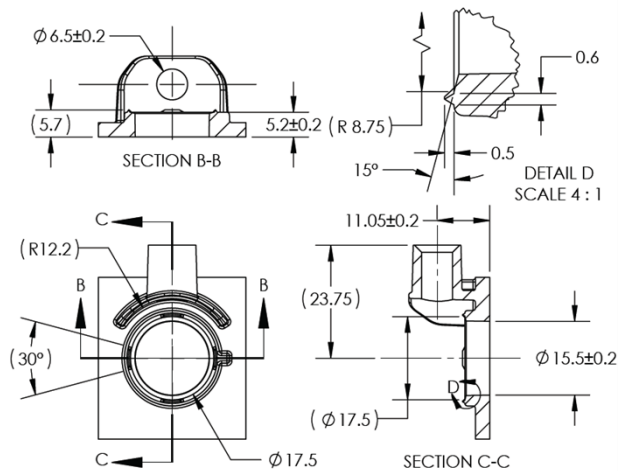
Rev. Date  
12April24

## Housing Mating Geometry:



REFERENCE MATING GEOMETRY  
ASYST P/N 56781

## Screw Mating Geometry:



REFERENCE MATING GEOMETRY  
ASYST P/N 56884

- Housing view represents the rotation direction and extents of the housing within the mating geometry (REF ±5°).
- Mating geometries represent reference starting geometries that might need to be adjusted depending on the application and material selection.

# ASYST

### NORTH AMERICA

Ethan Warner  
Regional Sales & Application Engineer  
5811 99th Ave.  
Kenosha, WI 53144—USA  
Phone: +1-765-246-2323  
Email: ewarner@asystech.com