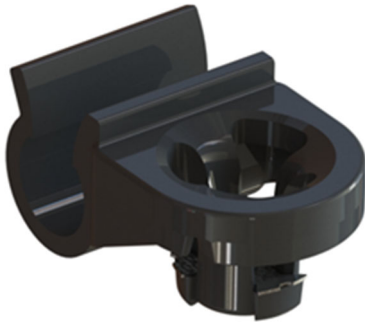


Ball Tracks

Rev. Date 08April24



PIBT
Push-In Ball Track
Ball Ø8 or 10 mm



SIBT
Snap-In Ball Track
Ball Ø 10 mm



Screw-In Ball Track
Ball Ø 8 w/ undercut

Uses:

- Headlamp and Fog Lamp reflectors or housings.
- Motor Adjuster Systems
- Accommodates side loads in Lamp created by the Ball Stud or Ball Pivot

Benefits:

- Efficient installation, simple mating tool geometry.
- Capable of being assembled in a manual or automated process.
- Low profile designs fit into tight spaces.

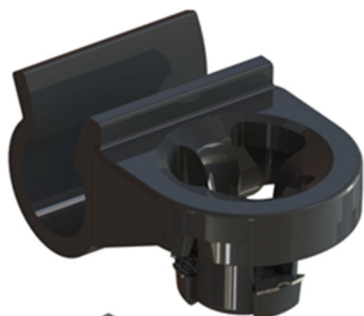
Specifications:

- Socket Material: POM
- Mating Panel Material: Plastic or Die Cast Metal
- Ball Diameter: 8.0mm or 10.0mm

ASYST

NORTH AMERICA

Ethan Warner
Regional Sales & Application Engineer
5811 99th Ave.
Kenosha, WI 53144—USA
Phone: +1-765-246-2323
Email: ewarner@asysttech.com



PIBT (ASYST P/N 23259) :

- **PUSH-IN BALL TRACK** for \varnothing 10 mm Ball
- Installs into Molded Blind Hole or Boss
- Insertion Force on print: **Max. 100N**
- Pull-out Force: **Min. 160N**
- Track Length: travel - 10.0mm



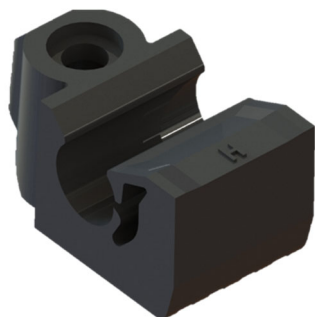
SIBT (ASYST P/N 36036) :

- **SNAP-IN BALL TRACK** for \varnothing 10 mm Ball
- Installs into Rectangular open Hole in Panel
- Insertion Force on print: **Max. 150N**
- Pull-out Force: **Min. 300N**
- Track Length: travel - 10.0mm



Ball Track (ASYST P/N 25906) :

- **SCREW-IN BALL TRACK** for \varnothing 8 mm Ball with undercut
- Screws into plastic Screw Boss
- Insertion Force on print: **Max. 200**
- Pull-out Force: **Min. 400**
- Track Length: travel - 17.0mm



HP Ball Track (ASYST P/N 36865) :

- **SCREW-IN BALL TRACK** for \varnothing 10 mm Ball
- Screws into plastic Screw Boss
- Insertion Force on print: **Max. 150N**
- Pull-out Force: **Min. 440N**
- Track Length: travel - 10.0mm

ASYST

NORTH AMERICA

Ethan Warner
Regional Sales & Application Engineer
5811 99th Ave.
Kenosha, WI 53144—USA
Phone: +1-765-246-2323
Email: ewarner@asysttech.com